

**NICK HUMPHREYS**

SALES · LETTINGS · STUDENT

SINCE 1986

**St Marys Close, , LE11 5DB**

**£105 Per Week**

## Further Information

2025/26 AVAILABLE PROPERTY WITH HALF SUMMER RENT FOR JULY

Ideal house for Post Graduate students as it comprises Private Parking for THREE cars with 3 large (> 15 m2) bedrooms available for the 2025/26 academic year plus guest bedroom/ snug lounge/ Private study room.

Rent, Fees and Terms

Weekly Rent:

£105.00 per person per week / £5,250.00 per person per annum 50 weeks - INCLUSIVE OF PERSONAL CONTENTS INSURANCE

or

£134.00 per person per week / £6,700.00 per person per annum 50 weeks - INCLUSIVE OF GAS, ELECTRIC, WATER, PERSONAL CONTENTS INSURANCE, TV LICENCE & INTERNET.

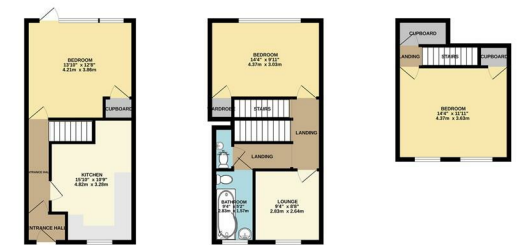
Available: 1st July 2025

Deposit: NO DEPOSIT (Guarantors required)

Inclusive of personal contents insurance\*

Energy Performance Rating Grade C

\*Terms & Conditions apply



TOTAL FLOOR AREA: 1023 sq ft (95.0 sq m) approx.  
\*All areas are approximate and may differ from actual measurements. We do not warrant the accuracy of these measurements. It is recommended that you verify the measurements and areas for yourself. The actual measurements may vary from those shown on the floor plan. All areas are approximate and may differ from actual measurements. We do not warrant the accuracy of these measurements. It is recommended that you verify the measurements and areas for yourself. The actual measurements may vary from those shown on the floor plan.

